

| | | |
|----|----|-----|
| 电力 | 暖通 | 动力 |
| 建筑 | 结构 | 给排水 |
| 会 | 签 | |

PT230282-3 瑞典-集装箱宿舍C

建筑概况:

1. 该建筑为2个散件箱组成, 单箱尺寸9000×3000×2591mm。两层, 带屋顶。

荷载设防:

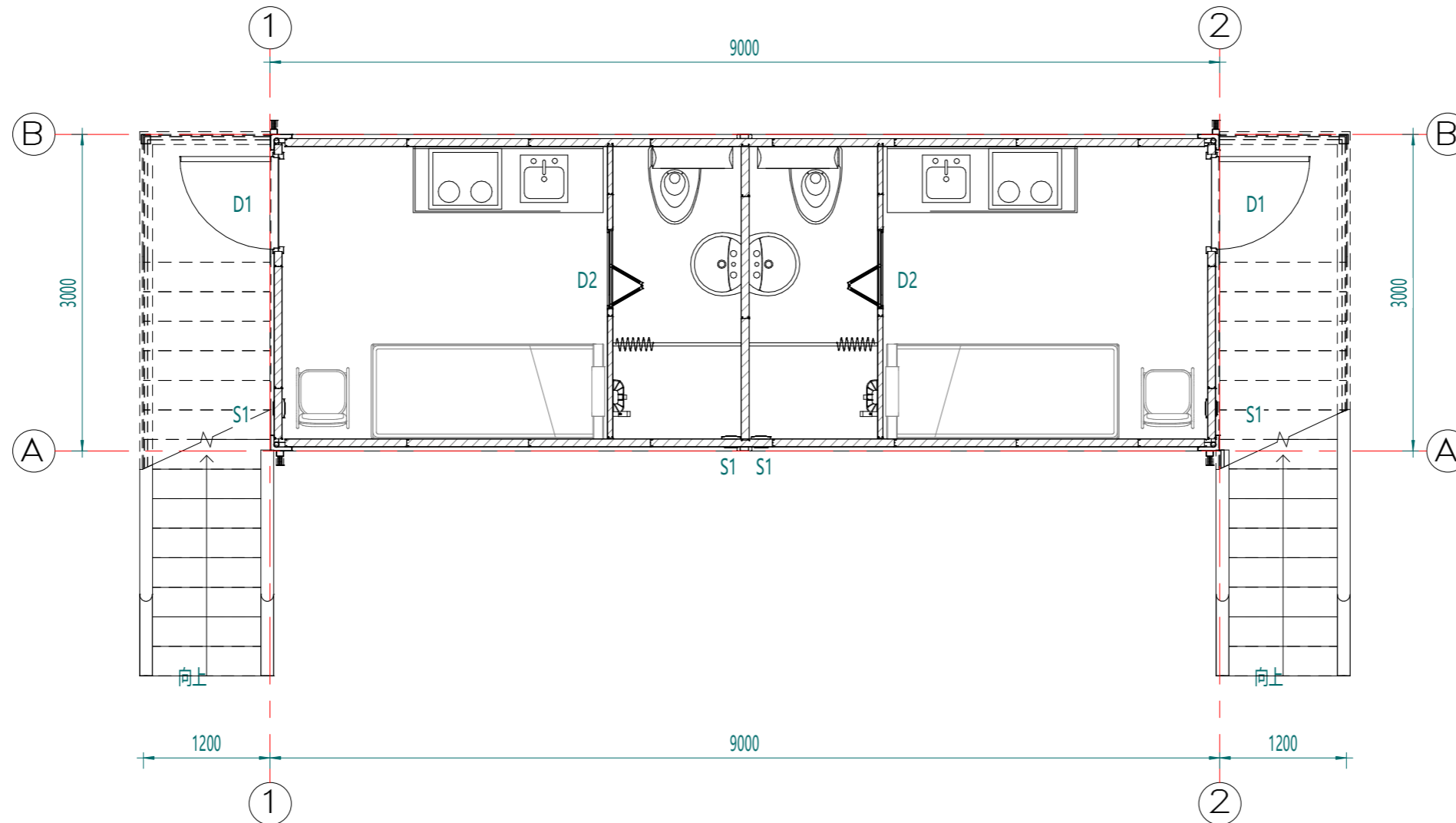
基本风速: 120km/h 雪荷载: 3.00kN/m² 箱底活载: 2.00kN/m²

材料参数:

- 箱体框架: 所有型材采用SGH440高强镀锌, 喷粉烤漆处理。无叉车梁。框架使用散件出运, 现场搭建。立柱/框架梁厚度为3mm, 内部设有保温棉填充。
- 箱顶板: 70mm岩棉夹芯板顶, 上面板0.40mm彩钢单板(彩钢板为AZM100g/m²+PE20/5um)+下面板0.40mm彩钢单板(彩钢板为AZM100g/m²+PE20/5um)。
- 外墙面板: 75mm岩棉夹芯板墙面, 彩钢板面板厚度0.40mm, 彩钢板表面AZM100g/m²+PE20/5um。
- 内墙面板: 50mm岩棉夹芯板墙面, 彩钢板面板厚度0.40mm, 彩钢板表面AZM100g/m²+PE20/5um。
- 地面参数: 1.8mmPVC地板+18mm水泥纤维板+箱底框架(100mmPU发泡填充)+小波纹单板封底。PVC地板颜色为木纹。卫生间PVC地板更换为2.5mmPVC地板, 颜色灰色圆点。
- 楼梯: 钢制单跑楼梯, 含扶手(镀锌方管+喷塑)
- 门: D1: 920x2035mm高低门槛钢制单开门(内部保温棉填充)
D2: 800x2000mm铝合金折叠门
换气扇: S1:5寸PVC换气扇
- 电力标准: 欧标电力, 我司提供。
- 卫浴标准: 我司提供。
- 橱柜: 1.8*6米橱柜。含水龙头, 不锈钢水槽, 电磁炉, 及橱柜给排水。
- 落水系统: PVC檐沟+75x50mmPVC落水管。
- 其他: 需提供空调、热水器。

| | | | |
|--|---------------------|-------------|-----------------|
| Copyright 2016. 本图版权归浙江普天集成房屋有限公司所有, 除本工程外对本图的任何其它用途均被限制。 THE OWNERSHIP OF THE COPYRIGHT IN THIS DRAWING IS RETAINED BY ZHEJIANG PUTIAN INTEGRATED HOUSING CO.LTD. WRITTEN CONSENT MUST BE OBTAINED BEFORE ANY USE OR REPRODUCTION OF THE DRAWING. | | | |
| 版本 Rev. | 修改内容 Description | 日期 Date | 发布人 who send |
|  Zhejiang Putian integrated housing Co., Ltd. Hangzhou Zhongpu Architecture Design (Institute) Co., Ltd. | | | |
| 证书等级 | | | |
| 证书编号 | | | |
| 合作设计单位 Cooperative Designer | | | |
| 工序 Process | 签名 Signature | 日期 Date | |
| 审定 Authorized By | | | |
| 审核 Verified By | | | |
| 项目负责人 Process | | | |
| 校对 Checked By | | | |
| 设计 Designed By | | | |
| 制图 Drawn By | | | |
| 执业签章 Engineer Signature | | | |
| 出图签章 Engineer Signature | | | |
| 项目名称 Project Name 瑞典-集装箱宿舍C | | | |
| 图名 Title 设计说明 | | | |
| 工程编号 No. | PT230282-3 | 专业 Spec. | JZ |
| 比例 | | 图号 | J0-0 |
| 未盖技术出图章本图纸无效 This drawing is valid only after being stamped and released by the main. | | | |

| | | |
|----|----|-----|
| 电力 | 暖通 | 动力 |
| 建筑 | 结构 | 给排水 |
| 会签 | | |



1F平面布置图

Copyright 2016.
 本图版权归浙江普天集成房屋有限公司所有，除本工程外对本图的任何其它用途均被禁止。
 THE OWNERSHIP OF THE COPYRIGHT IN THIS DRAWING IS RETAINED BY ZHEJIANG PUTIAN INTEGRATED HOUSING CO., LTD. WRITTEN CONSENT MUST BE OBTAINED BEFORE ANY USE OR REPRODUCTION OF THE DRAWING.

| 版本 | 修改内容 | 日期 | 发布人 |
|------|-------------|------|----------|
| Rev. | Description | Date | who send |



Zhejiang Putian integrated housing Co., Ltd.
 Hangzhou Zhongpu Architecture Design (institute) Co., Ltd.

| | |
|--------|----------------------|
| 证书等级 | |
| 证书编号 | |
| 合作设计单位 | Cooperative Designer |

| 工序 | 签名 | 日期 |
|---------------|-----------|------|
| Process | Signature | Date |
| 审定 | | |
| Authorized By | | |
| 审核 | | |
| Verified By | | |
| 项目负责人 | | |
| Process | | |
| 校对 | | |
| Checked By | | |
| 设计 | | |
| Designed By | | |
| 制图 | | |
| Drawn By | | |

执业签章
 Engineer Signature

出图签章
 Engineer Signature

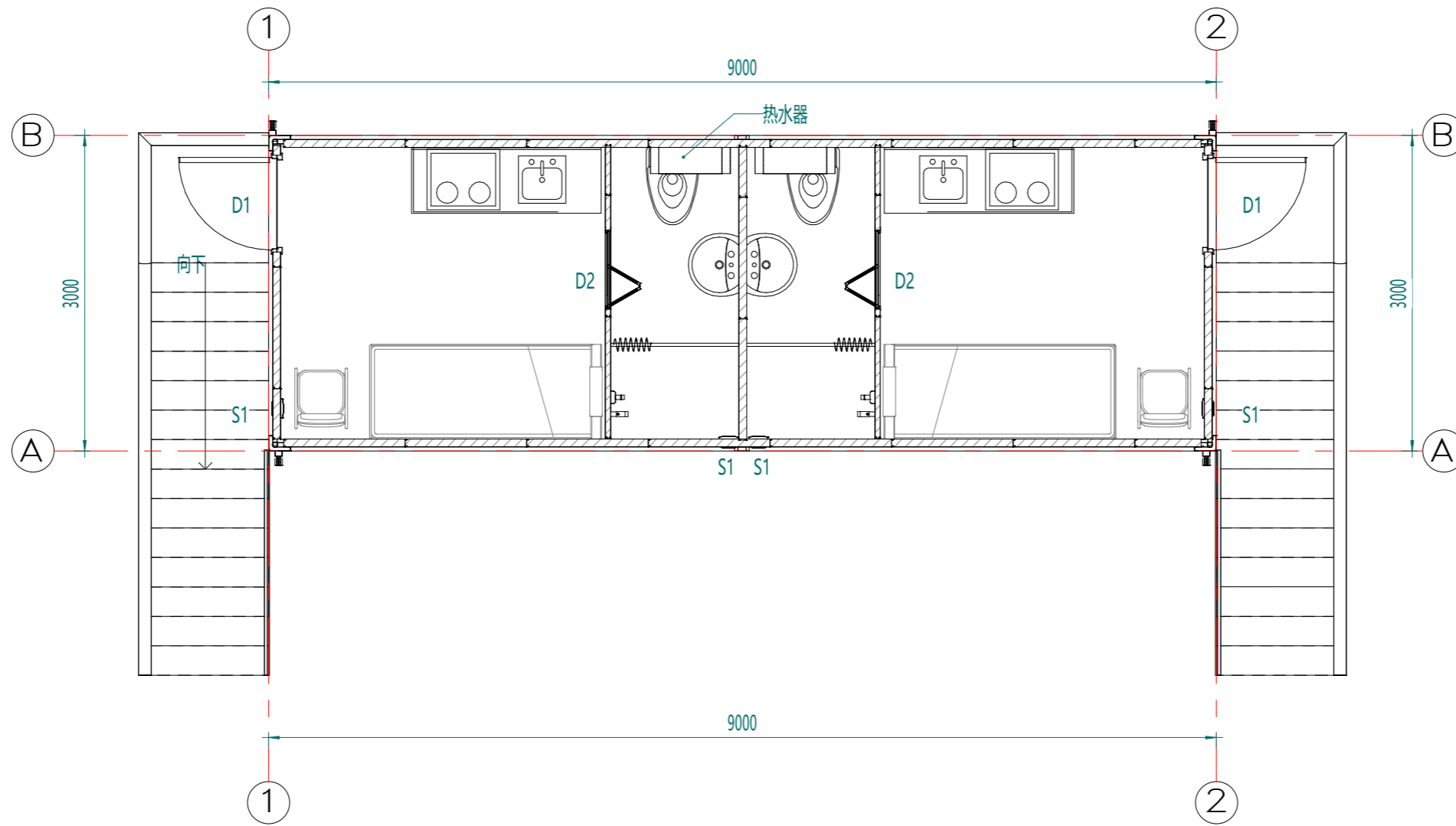
项目名称
 Project Name
 瑞典·集装箱宿舍C

图名
 Title
 1F平面布置图

| | | | |
|------|------------|----|------|
| 工程编号 | PT230282-3 | 专业 | JZ |
| 比例 | | 图号 | J0-1 |

未盖技术出图章本图纸无效
 This drawing is valid only after being stamped and released by the main.

| | | |
|----|----|-----|
| 电力 | 暖通 | 动力 |
| 建筑 | 结构 | 给排水 |
| 会签 | | |



2F平面布置图

Copyright 2016.

本图版权归浙江普天集成房屋有限公司所有，除本工程外对本图的任何其它用途均受限制。
 THE OWNERSHIP OF THE COPYRIGHT IN THIS DRAWING IS RETAINED BY ZHEJIANG PUTIAN INTEGRATED HOUSING CO.LTD. WRITTEN CONSENT MUST BE OBTAINED BEFORE ANY USE OR REPRODUCTION OF THE DRAWING.

| Rev | 修改内容 Description | 日期 Date | 发布人 who send |
|-----|---------------------|------------|-----------------|
|-----|---------------------|------------|-----------------|

PTH

Zhejiang Putian integrated housing Co., Ltd.
 Hangzhou Zhongpu Architecture Design (institute) Co., Ltd.

| | |
|--------------------------------|--|
| 证书等级 | |
| 证书编号 | |
| 合作设计单位 Cooperative Designer | |

| 工序 Process | 签名 Signature | 日期 Date |
|---------------------|-----------------|------------|
| 审定 Authorized By | | |
| 审核 Verified By | | |
| 项目负责人 Process | | |
| 校对 Checked By | | |
| 设计 Designed By | | |
| 制图 Drawn By | | |

执业签章
Engineer Signature

出图签章
Engineer Signature

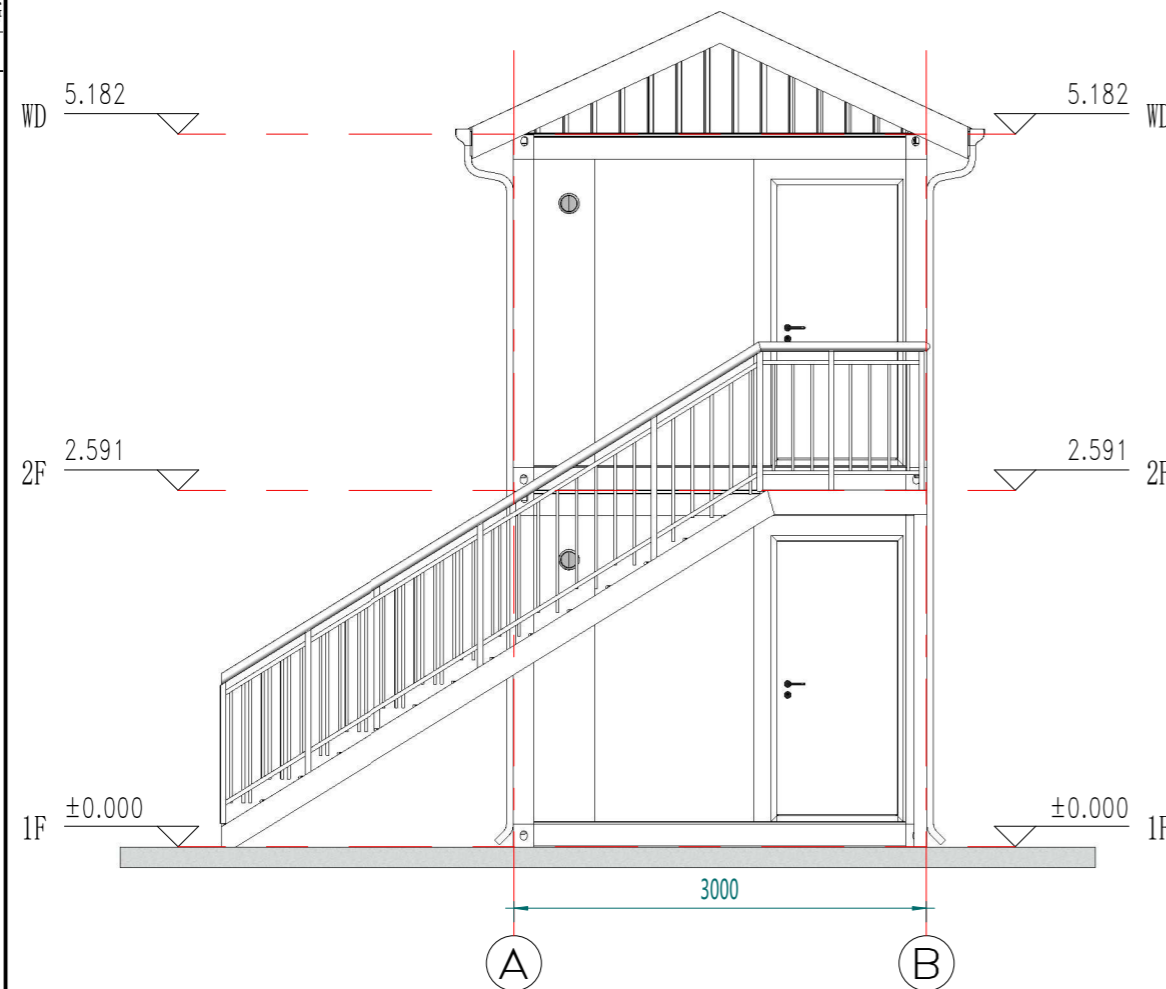
项目名称
Project Name
瑞典·集装箱宿舍C

图名
Title
2F平面布置图

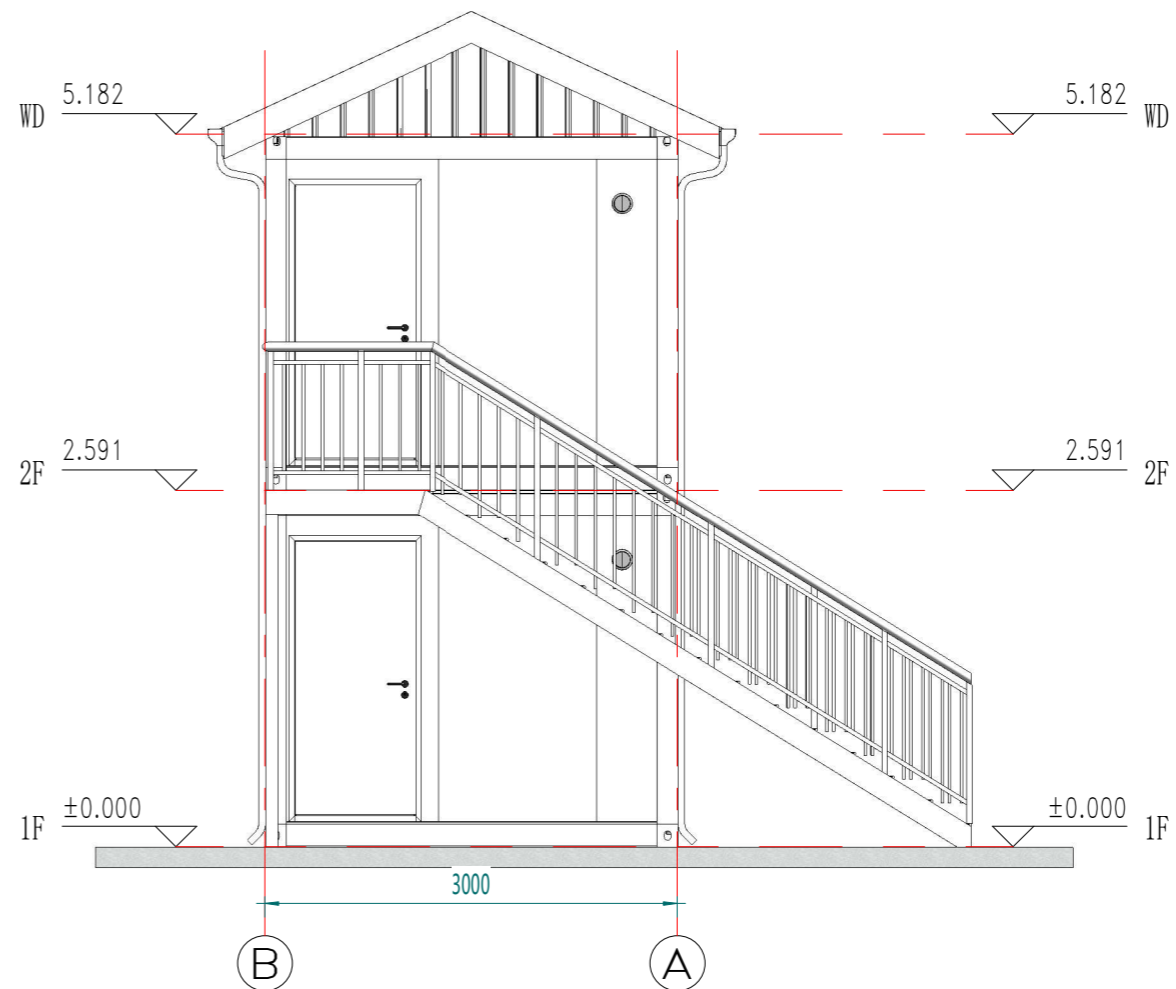
| | | | |
|-------------|------------|-------------|------|
| 工程编号 No. | PT230282-3 | 专业 Spec. | JZ |
| 比例 Scale | | 图号 No. | J0-2 |

未盖技术出图章本图纸无效
 This drawing is valid only after being stamped and released by the main.

| | | |
|----|----|-----|
| 电力 | 暖通 | 动力 |
| 建筑 | 结构 | 给排水 |
| 会 | 签 | |



2轴立面



1轴立面

Copyright 2016.
 本图版权归浙江普天集成房屋有限公司所有，除本工程外对本图的任何其它用途均被禁止。
 THE OWNERSHIP OF THE COPYRIGHT IN THIS DRAWING IS RETAINED BY ZHEJIANG PUTIAN INTEGRATED HOUSING CO., LTD. WRITTEN CONSENT MUST BE OBTAINED BEFORE ANY USE OR REPRODUCTION OF THE DRAWING.

| 版本 | 修改内容 | 日期 | 发布人 |
|------|-------------|------|----------|
| Rev. | Description | Date | who send |



Zhejiang Putian integrated housing Co., Ltd.
 Hangzhou Zhongpu Architecture Design (institute) Co., Ltd.

| | |
|--------|--|
| 证书等级 | |
| 证书编号 | |
| 合作设计单位 | |

| 工序 | 签名 | 日期 |
|---------|-----------|------|
| Process | Signature | Date |
| 审定 | | |
| 审核 | | |
| 项目负责人 | | |
| 校对 | | |
| 设计 | | |
| 制图 | | |

执业签章
 Engineer Signature

出图签章
 Engineer Signature

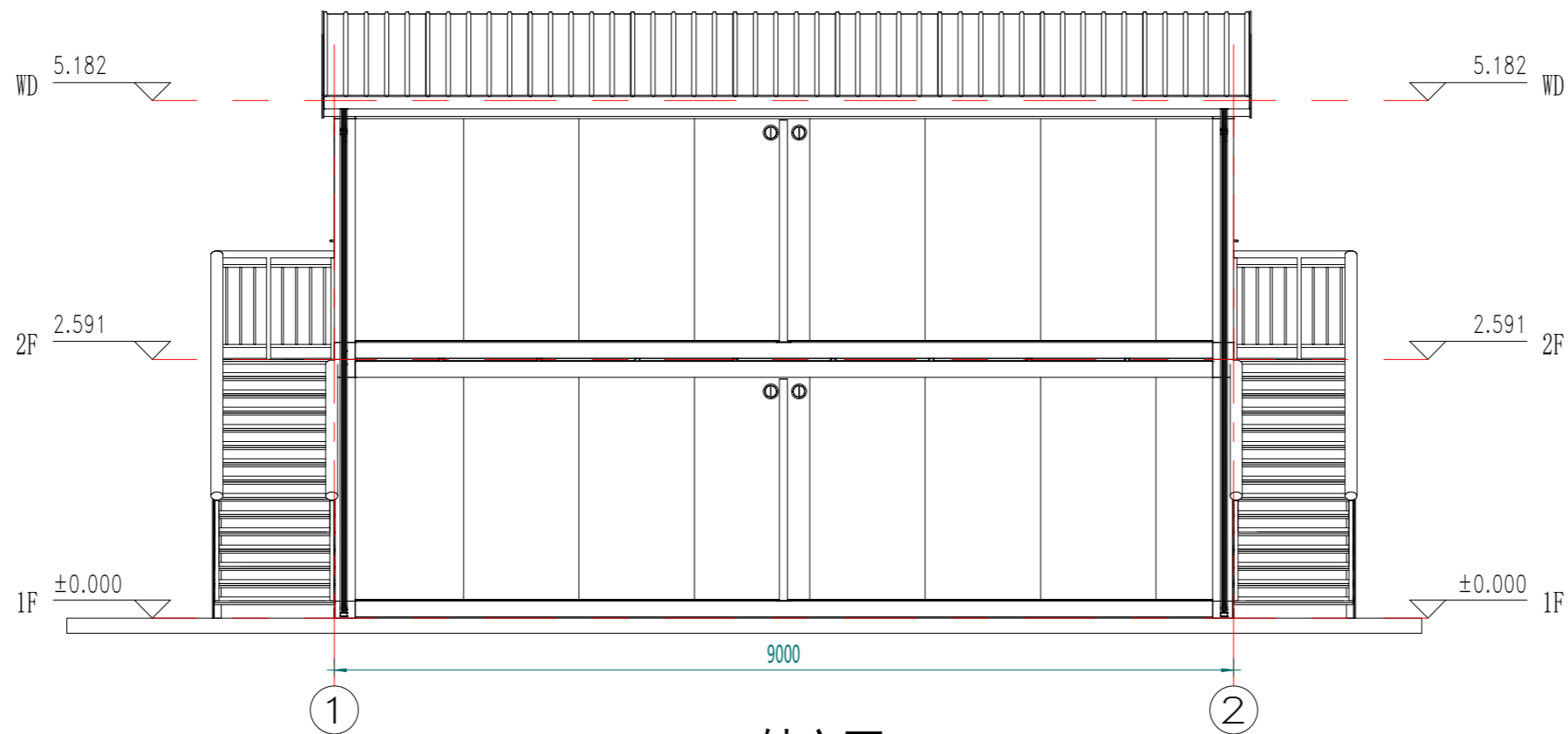
项目名称
 Project Name
 瑞典·集装箱宿舍C

图名
 Title
 立面布置图

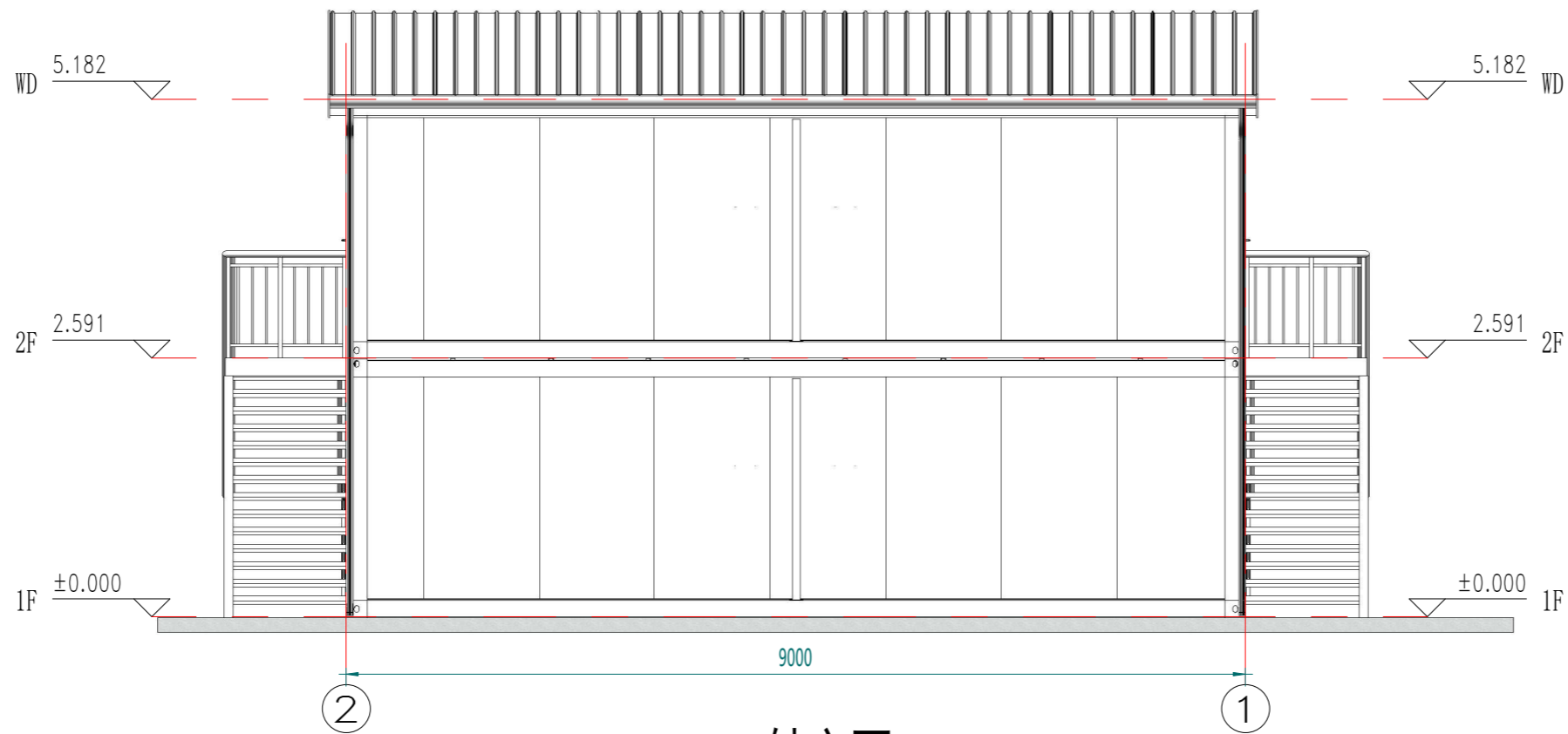
| | | | |
|------|------------|----|------|
| 工程编号 | PT230282-3 | 专业 | JZ |
| 比例 | | 图号 | J0-3 |

未盖技术出图章本图纸无效
 This drawing is valid only after being stamped and released by the firm.

| | | |
|----|----|-----|
| 电力 | 暖通 | 动力 |
| 建筑 | 结构 | 给排水 |
| 会签 | | |



A轴立面



B轴立面

Copyright 2016.

本图版权归浙江普天集成房屋有限公司所有，除本工程外对本图的任何其它用途均受限制。
THE OWNERSHIP OF THE COPYRIGHT IN THIS DRAWING IS RETAINED BY ZHEJIANG PUTIAN INTEGRATED HOUSING CO.LTD. WRITTEN CONSENT MUST BE OBTAINED BEFORE ANY USE OR REPRODUCTION OF THE DRAWING.

| Rev. | 修改内容 Description | 日期 Date | 发布人 who send |
|------|---------------------|------------|-----------------|
|------|---------------------|------------|-----------------|

PTH

Zhejiang Putian integrated housing Co., Ltd.
Hangzhou Zhongpu Architecture Design (institute) Co., Ltd.

| | |
|--------------------------------|--|
| 证书等级 | |
| 证书编号 | |
| 合作设计单位 Cooperative Designer | |

| 工序 Process | 签名 Signature | 日期 Date |
|---------------------|-----------------|------------|
| 审定 Authorized By | | |
| 审核 Verified By | | |
| 项目负责人 Process | | |
| 校对 Checked By | | |
| 设计 Designed By | | |
| 制图 Drawn By | | |

执业签章
Engineer Signature

出图签章
Engineer Signature

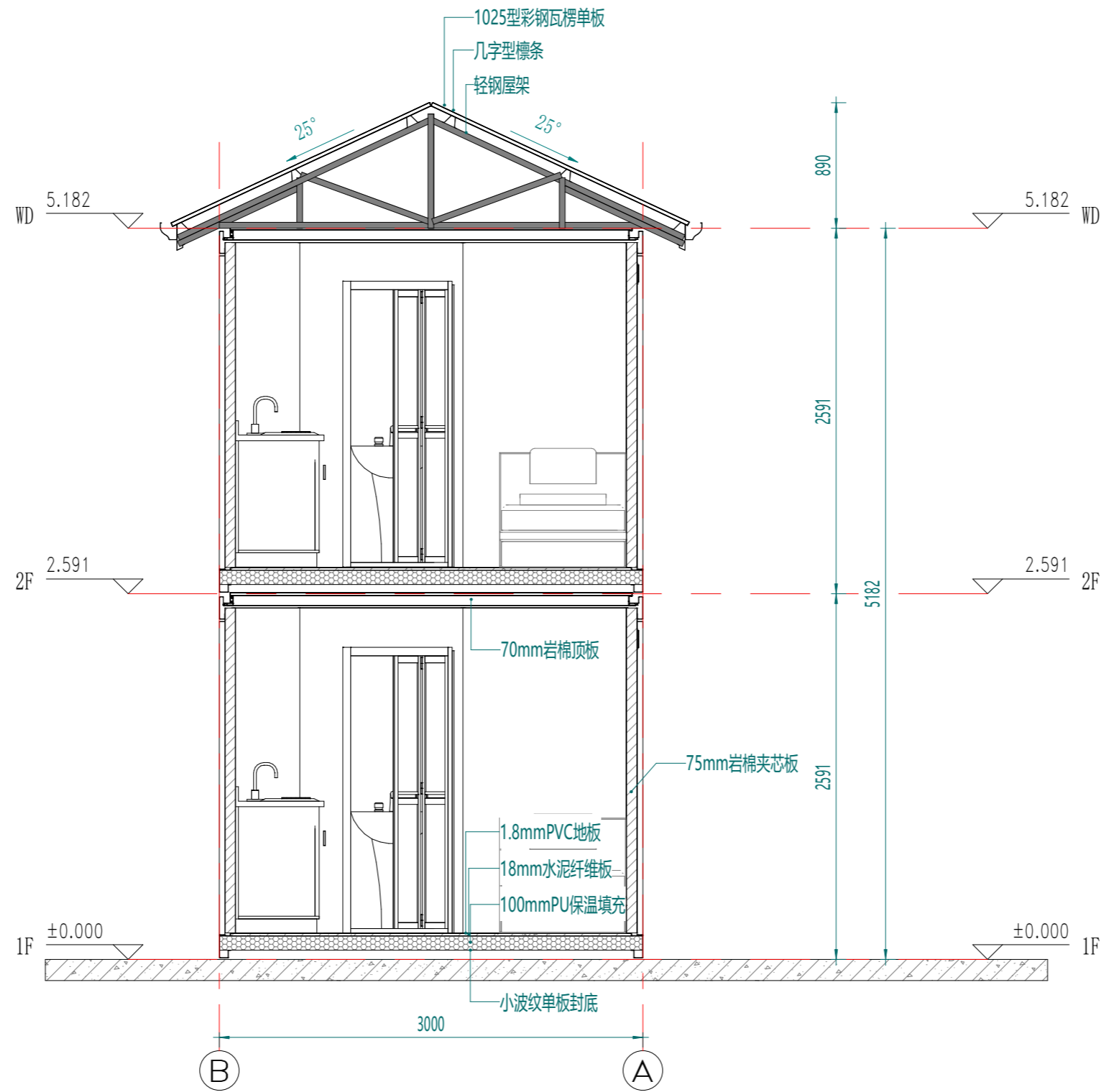
项目名称
Project Name
瑞典·集装箱宿舍C

图名
Title
立面布置图

| | | | |
|-------------|------------|------------|------|
| 工程编号 No. | PT230282-3 | 专业 Type | JZ |
| 比例 | | 图号 | J0-4 |

未盖技术出图章本图纸无效
This drawing is valid only after being stamped and released by the main.

| | | |
|----|----|-----|
| 电力 | 暖通 | 动力 |
| 建筑 | 结构 | 给排水 |
| 会签 | | |



剖面布置图

Copyright 2016.
 本图版权归浙江普天集成房屋有限公司所有，除本工程外对本图的任何其它用途均被禁止。
 必须获得本公司的书面许可。
 THE OWNERSHIP OF THE COPYRIGHT IN THIS DRAWING IS RETAINED BY
 ZHEJIANG PUTIAN INTEGRATED HOUSING CO.LTD. WRITTEN CONSENT MUST BE
 OBTAINED BEFORE ANY USE OR REPRODUCTION OF THE DRAWING.

| 版本 | 修改内容 | 日期 | 发布人 |
|------|-------------|------|----------|
| Rev. | Description | Date | who send |



Zhejiang Putian integrated housing Co., Ltd.
 Hangzhou Zhongpu Architecture Design (institute) Co., Ltd.

| | |
|--------|----------------------|
| 证书等级 | |
| 证书编号 | |
| 合作设计单位 | Cooperative Designer |

| 工序 | 签名 | 日期 |
|---------------|-----------|------|
| Process | Signature | Date |
| 审定 | | |
| Authorized By | | |
| 审核 | | |
| Verified By | | |
| 项目负责人 | | |
| Process | | |
| 校对人 | | |
| Checked By | | |
| 设计 | | |
| Designed By | | |
| 制图 | | |
| Drawn By | | |

执业签章
 Engineer Signature

出图签章
 Engineer Signature

项目名称
 Project Name
 瑞典-集装箱宿舍C

图名
 Title
 剖面布置图

| | | | |
|------|------------|----|------|
| 工程编号 | PT230282-3 | 专业 | JZ |
| 比例 | | 图号 | J0-5 |

未盖技术出图章本图纸无效
 This drawing is valid only after being stamped and released by the main.

| | | |
|----|----|-----|
| 电力 | 暖通 | 动力 |
| 建筑 | 结构 | 给排水 |
| 会签 | | |



注：颜色仅供参考，具体颜色按照订单备注或者样品为准

| | | | |
|--|---------------------|------------|-----------------|
| Copyright 2016. <small>本图版权归浙江普天集成房屋有限公司所有，除本工程外对本图的任何其它用途均受限制。 THE OWNERSHIP OF THE COPYRIGHT IN THIS DRAWING IS RETAINED BY ZHEJIANG PUTIAN INTEGRATED HOUSING CO.LTD. WRITTEN CONSENT MUST BE OBTAINED BEFORE ANY USE OR REPRODUCTION OF THE DRAWING.</small> | | | |
| 版本 Rev. | 修改内容 Description | 日期 Date | 发布人 who send |
|  Zhejiang Putian integrated housing Co., Ltd. Hangzhou Zhongpu Architecture Design (institute) Co., Ltd. | | | |
| 证书等级 | | | |
| 证书编号 | | | |
| 合作设计单位 Cooperative Designer | | | |
| 工序 Process | 签名 Signature | 日期 Date | |
| 审定 Authorized By | | | |
| 审核 Verified By | | | |
| 项目负责人 Process | | | |
| 校对 Checked By | | | |
| 设计 Designed By | | | |
| 制图 Drawn By | | | |
| 执业签章 Engineer Signature | | | |
| 出图签章 Engineer Signature | | | |
| 项目名称 Project Name | 瑞典-集装箱宿舍C | | |
| 图名 Title | 三维视图 | | |
| 工程编号 No. | PT230282-3 | 专业 Tab | JZ |
| 比例 | | 图号 | J0-6 |
| 未盖技术出图章本图纸无效 <small>This drawing is valid only after being stamped and released by the firm.</small> | | | |

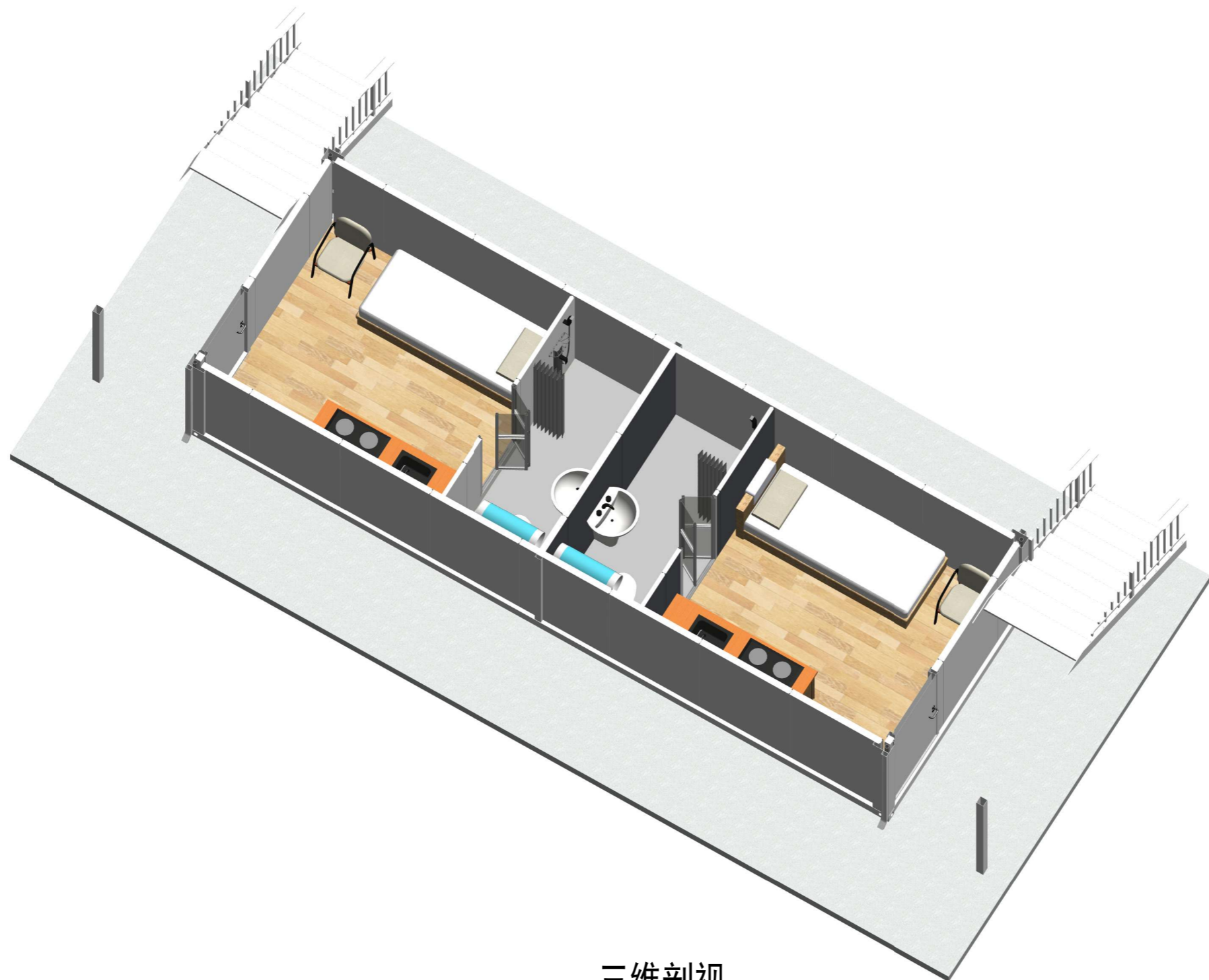
| | | |
|----|----|-----|
| 电力 | 暖通 | 动力 |
| 建筑 | 结构 | 给排水 |
| 会签 | | |



注：颜色仅供参考，具体颜色按照订单备注或者样品为准

| | | | |
|---|---------------------|------------|-----------------|
| Copyright 2016. | | | |
| <small>本图版权归浙江普天集成房屋有限公司所有，除本工程外对本图的任何其它用途均受限制。 THE OWNERSHIP OF THE COPYRIGHT IN THIS DRAWING IS RETAINED BY ZHEJIANG PUTIAN INTEGRATED HOUSING CO.LTD. WRITTEN CONSENT MUST BE OBTAINED BEFORE ANY USE OR REPRODUCTION OF THE DRAWING.</small> | | | |
| 版本 Rev. | 修改内容 Description | 日期 Date | 发布人 who send |
|  | | | |
| Zhejiang Putian integrated housing Co., Ltd. Hangzhou Zhongpu Architecture Design (institute) Co., Ltd. | | | |
| 证书等级 | | | |
| 证书编号 | | | |
| 合作设计单位 Cooperative Designer | | | |
| 工序 Process | 签名 Signature | 日期 Date | |
| 审定 Authorized By | | | |
| 审核 Verified By | | | |
| 项目负责人 Process | | | |
| 校对 Checked By | | | |
| 设计 Designed By | | | |
| 制图 Drawn By | | | |
| 执业签章 Engineer Signature | | | |
| 出图签章 Engineer Signature | | | |
| 项目名称 Project Name | 瑞典-集装箱宿舍C | | |
| 图名 Title | 三维视图 | | |
| 工程编号 No. | PT230282-3 | 专业 Type | JZ |
| 比例 Scale | | 图号 No. | J0-7 |
| 未盖技术出图章 本图纸无效 <small>This drawing is valid only after being stamped and released by the firm.</small> | | | |

| | | |
|----|----|-----|
| 电力 | 暖通 | 动力 |
| 建筑 | 结构 | 给排水 |
| 会签 | | |



三维剖视

Copyright 2016.

本图版权归浙江普天集成房屋有限公司所有，除本工程外对本图的任何其它用途均被禁止。
 THE OWNERSHIP OF THE COPYRIGHT IN THIS DRAWING IS RETAINED BY ZHEJIANG PUTIAN INTEGRATED HOUSING CO.LTD. WRITTEN CONSENT MUST BE OBTAINED BEFORE ANY USE OR REPRODUCTION OF THE DRAWING.

| 版本 Rev. | 修改内容 Description | 日期 Date | 发布人 who send |
|------------|---------------------|------------|-----------------|
|------------|---------------------|------------|-----------------|

PTH

Zhejiang Putian integrated housing Co., Ltd.
 Hangzhou Zhongpu Architecture Design (institute) Co., Ltd.

证书等级

证书编号

合作设计单位
Cooperative Designer

| 工序 Process | 签名 Signature | 日期 Date |
|---------------|-----------------|------------|
|---------------|-----------------|------------|

审定
Authorized By

审核
Verified By

项目负责人
Process

校对人
Checked By

设计
Designed By

制图
Drawn By

执业签章
Engineer Signature

出图签章
Engineer Signature

项目名称
Project Name

瑞典·集装箱宿舍C

图名
Title

三维剖视

| | | | |
|-------------|------------|------------|----|
| 工程编号 No. | PT230282-3 | 专业 Spec | JZ |
|-------------|------------|------------|----|

| | | | |
|----|--|----|------|
| 比例 | | 图号 | J0-8 |
|----|--|----|------|

未盖技术出图章本图纸无效
 This drawing is valid only after being stamped and released by the main.